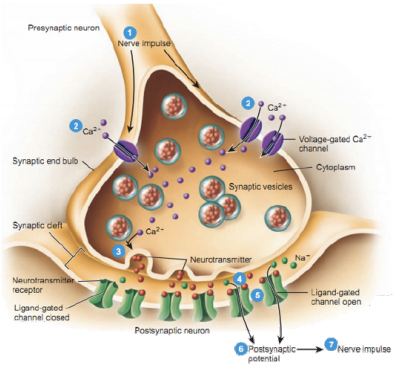


HLTH 147 | QUIZ 4 OF 29 (Lectures 6 & 7)

NAMES _____

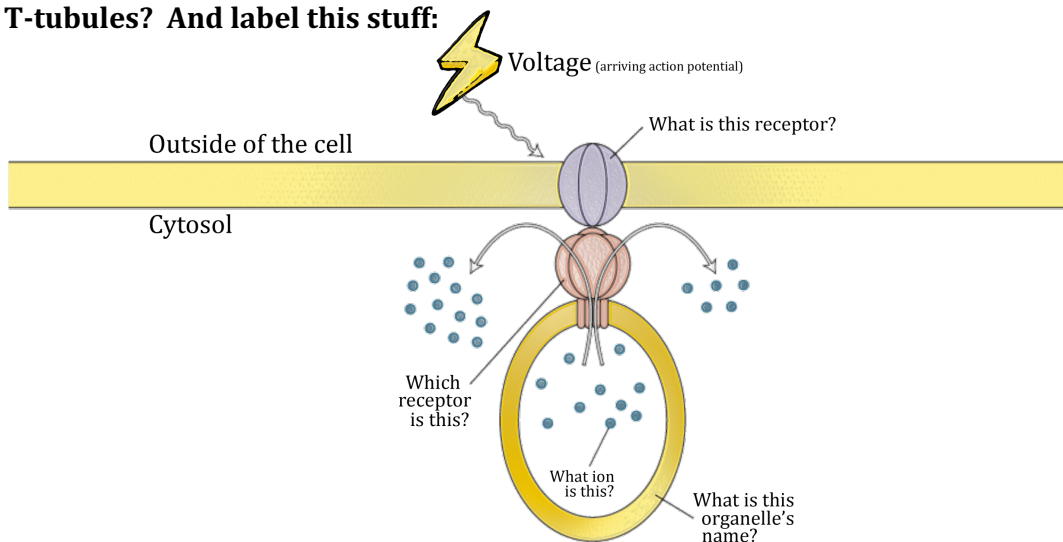
How is acetylcholine released from a motor neuron?



Describe the neuromuscular junction:

What is acetylcholinesterase? How can it be inhibited? What would the consequences be?

What are T-tubules? And label this stuff:



What is a reflex arc? And very generally, how do they work?

What is a muscle spindle? What do they sense? Also, describe their structure and include the difference between alpha and gamma motor neurons and extrafusal and intrafusal fibers. Other than that, be general here.

What does a Golgi tendon organ sense? Where does it live? What is its function? How does it perform that function?